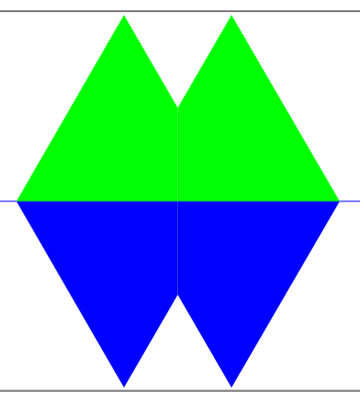
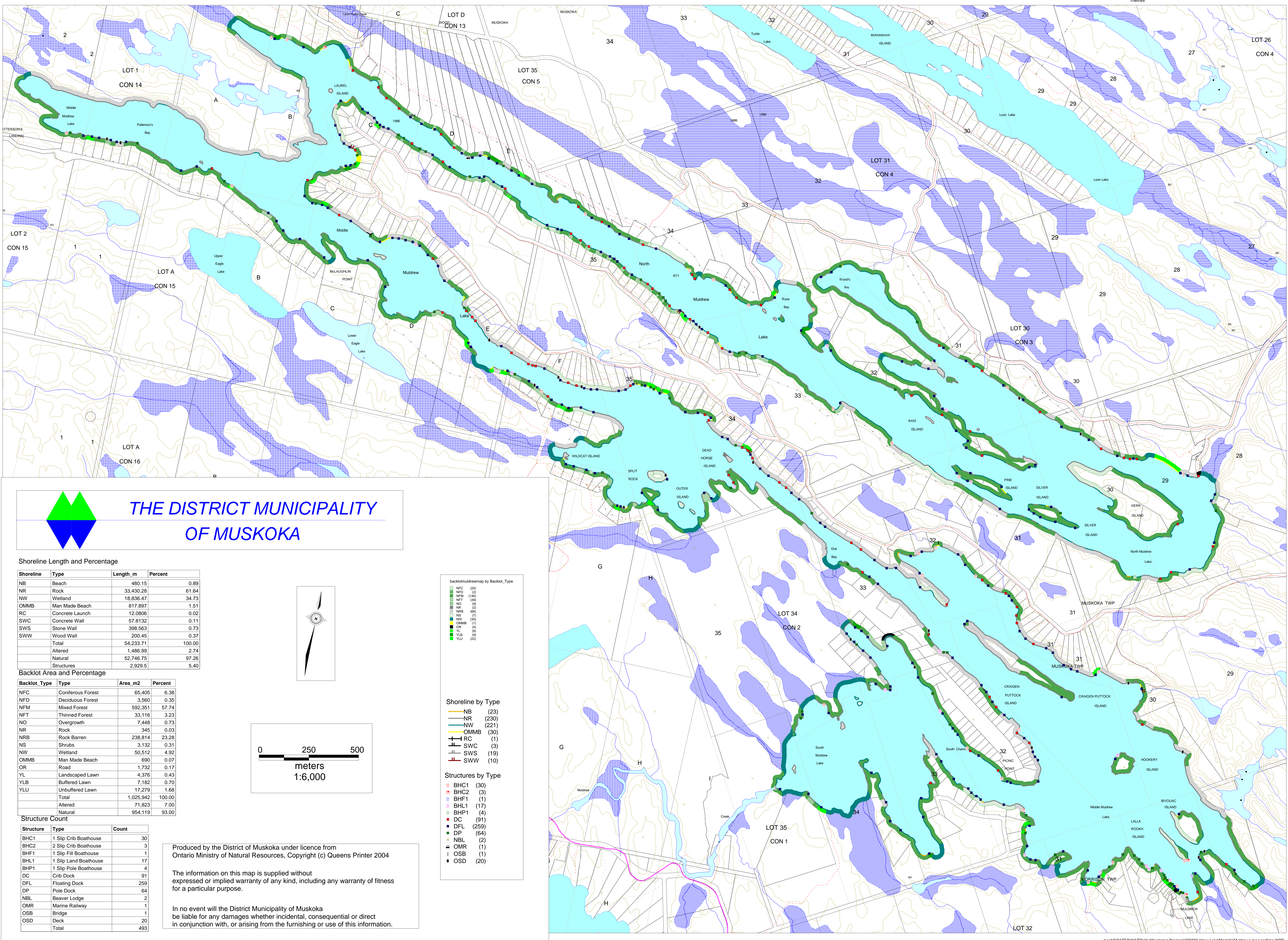


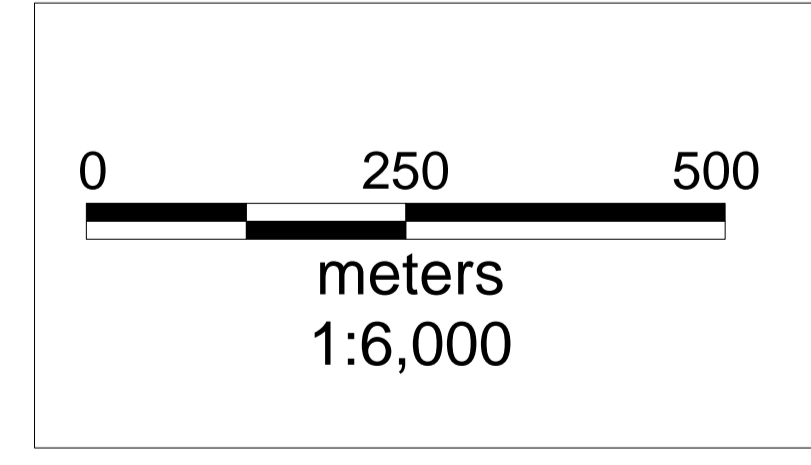
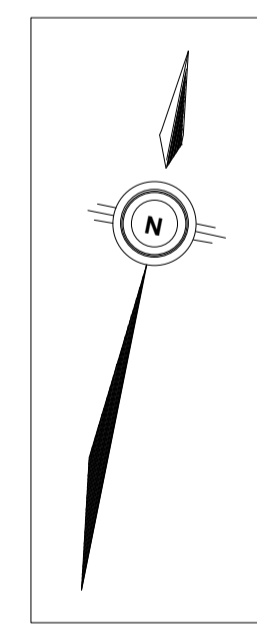
Muldrew Lake Land Use Survey, June 2003



THE DISTRICT MUNICIPALITY OF MUSKOKA

Shoreline Length and Percentage

Shoreline Type	Length_m	Percent
NB	480.15	0.89
NR	33,430.28	61.64
NW	18,836.47	34.73
OMMB	817.897	1.51
RC	12.0806	0.02
SWC	57.8132	0.11
SWS	398.563	0.73
SWW	200.45	0.37
Total	54,233.71	100.00
Altered	1,486.99	2.74
Natural	52,746.75	97.26
Structures	2,929.5	5.40



Backlot Area and Percentage

Backlot_Type	Type	Area_m2	Percent
NFC	Coniferous Forest	65,405	6.38
NFD	Deciduous Forest	3,560	0.35
NFM	Mixed Forest	592,351	57.74
NFT	Thinned Forest	33,116	3.23
NO	Overgrowth	7,448	0.73
NR	Rock	345	0.03
NRB	Rock Barren	238,814	23.28
NS	Shrubs	3,132	0.31
NW	Wetland	50,512	4.92
OMMB	Man Made Beach	690	0.07
OR	Road	1,732	0.17
YL	Landscaped Lawn	4,376	0.43
YLB	Buffered Lawn	7,182	0.70
YLU	Unbuffered Lawn	17,279	1.68
Total		1,025,942	100.00
Altered		71,823	7.00
Natural		954,119	93.00

Structure Count

Structure Type	Count	
BHC1	1 Slip Crib Boathouse	30
BHC2	2 Slip Crib Boathouse	3
BHF1	1 Slip Fill Boathouse	1
BHL1	1 Slip Land Boathouse	17
BHP1	1 Slip Pole Boathouse	4
DC	Crib Dock	91
DFL	Floating Dock	259
DP	Pole Dock	64
NBL	Beaver Lodge	2
OMR	Marine Railway	1
OSB	Bridge	1
OSD	Deck	20
Total		493

Produced by the District of Muskoka under licence from Ontario Ministry of Natural Resources, Copyright (c) Queens Printer 2004

The information on this map is supplied without expressed or implied warranty of any kind, including any warranty of fitness for a particular purpose.

In no event will the District Municipality of Muskoka be liable for any damages whether incidental, consequential or direct in conjunction with, or arising from the furnishing or use of this information.

backlotmudrewmap by Backlot_Type

NFC	(20)
NFD	(2)
NFM	(145)
NFT	(59)
NO	(9)
NR	(2)
NRB	(66)
NS	(7)
NW	(20)
OMMB	(1)
OR	(4)
YL	(6)
YLB	(9)
YLU	(22)

Shoreline by Type

NB	(23)
NR	(230)
NW	(221)
OMMB	(30)
RC	(1)
SWC	(3)
SWS	(19)
SWW	(10)

Structures by Type

BHC1	(30)
BHC2	(3)
BHF1	(1)
BHL1	(17)
BHP1	(4)
DC	(91)
DFL	(259)
DP	(64)
NBL	(2)
OMR	(1)
OSB	(1)
OSD	(20)