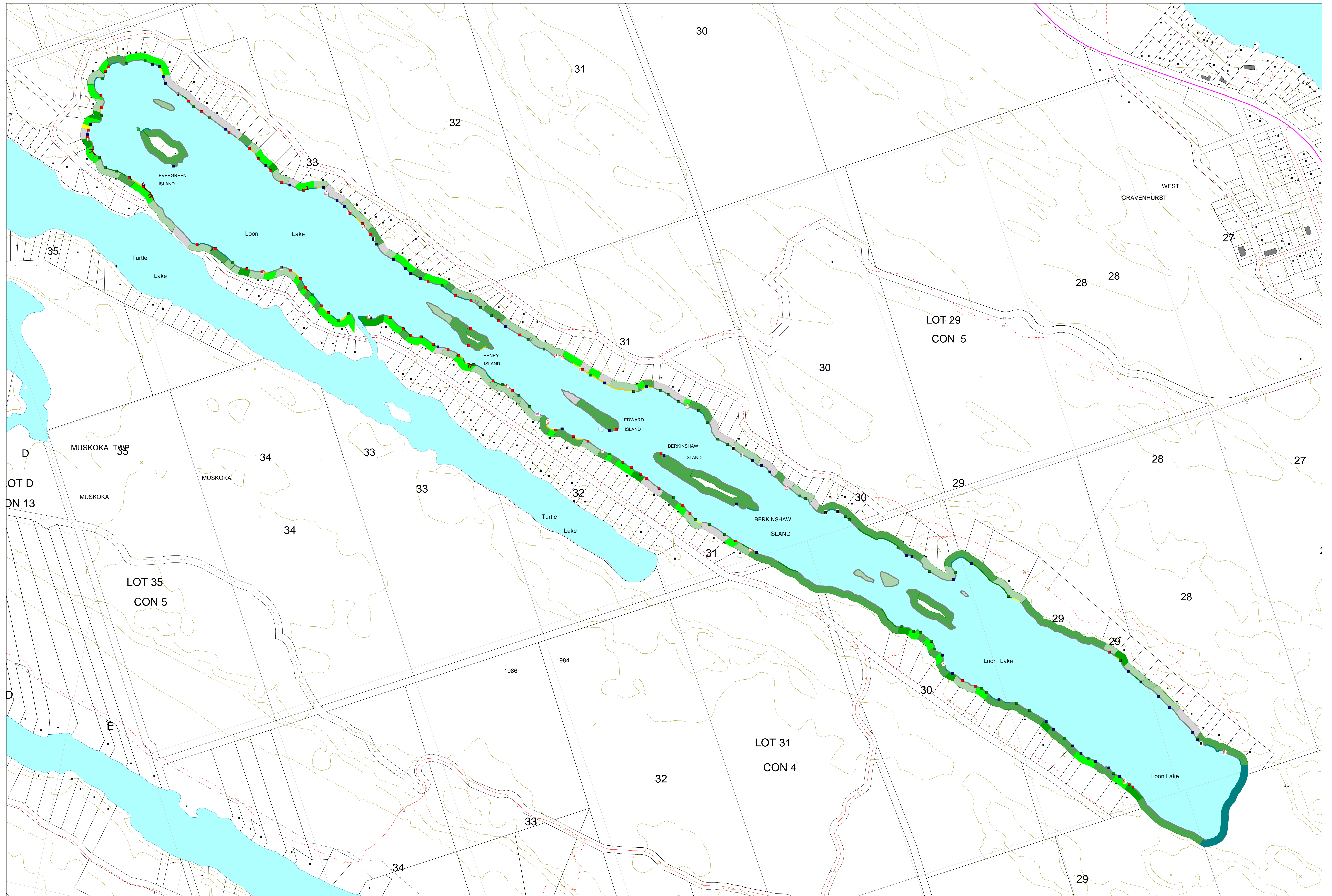
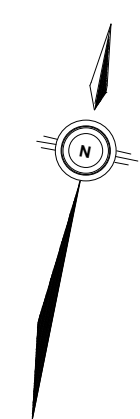


Loon Lake Land Use Survey, July 2004



Scale
1 : 4,000

0 0.125 0.25
kilometres



Structure Count

Structure	Type	Count
DC	Cable Dock	64
DPL	Floating Dock	51
DP	Pillar Dock	58
OSD	Dock	9
OSSC	Steep-roof	1
	Total	200

Shoreline Length and Percentages

Shoreline	Type	Length_m	Percent
NB	Beach	671.95	5.74
NR	Rock	8,774.56	74.98
NS	Shrub	742.44	6.34
NW	Wetland	1,104.08	9.43
OMMB	Man Made Beach	133.20	1.03
RC	Concrete Ramp	7.86	0.07
ROTH	Other Ramp	6.40	0.05
SWWS	Stone Shorewall	132.90	1.14
SWWW	Wood Shorewall	142.70	1.22
Total		11,703.11	100.00
Natural		11,293.05	96.50
Altered		410.06	3.50
Structures		971.50	8.30

Backlot Area and Percentages

Backlot	Type	Area_sq	Percent
NFM	Mixed Forest	99,889.39	45.18
NFT	Thinned Forest	44,976.95	20.34
NO	Overgrowth	6,062.39	2.74
NRB	Rock Barren	24,223.25	10.96
NW	Wetland	5,694.74	2.58
OMMB	Man Made Beach	229.79	0.11
YL	Landscaped Yard	344.44	0.16
YLB	Buffered Lawn	8,038.47	3.64
YLU	Unbuffered Lawn	31,631.21	14.31
Total		221,077.63	100.00
Natural		129,807.38	58.72
Altered		81,270.25	36.76

Legend

loon_structures_final by Structure	loon_shoreline_final by Shoreline	loon_backlot_final by Backlot
BHC1 (17)	NB (20)	NFM (37)
DC (64)	NR (53)	NFT (32)
DPL (51)	NS (12)	NO (7)
DP (58)	NW (24)	NRB (19)
OSD (9)	OMMB (5)	NW (1)
OSSC (1)	RC (1)	OMMB (1)
	ROTH (1)	YLB (1)
	SWWS (6)	YLU (32)
	SWWW (6)	



Produced by the District of Muskoka under license from
Ontario Ministry of Natural Resources. Copyright (c) GeoEye Proxim 2004

The information on this map is supplied without
expressed or implied warranty of any kind, including any warranty of fitness
for a particular purpose.

In no event will the District Municipality of Muskoka
be liable for any damages whether incidental, consequential or direct
in conjunction with, or arising from the furnishing or use of this information.